

Background:

Granulocyte-Macrophage Colony Stimulating Factor (GM-CSF) was initially characterized as a growth factor that can support the in vitro colony formation of granulocyte-macrophage progenitors. It is produced by a number of different cell types (including activated T cells, B cells, macrophages, mast cells, endothelial cells and fibroblasts) in response to cytokine or immune and inflammatory stimuli. Besides granulocyte-macrophage progenitors, GM-CSF is also a growth factor for erythroid, megakaryocyte and eosinophil progenitors. On mature hematopoietic cells, GM-CSF is a survival factor for and activates the effector functions of granulocytes, monocytes/macrophages and eosinophils. GM-CSF has also been reported to have a functional role on non-hematopoietic cells. It can induce human endothelial cells to migrate and proliferate. Additionally, GM-CSF can also stimulate the proliferation of a number of tumor cell lines, including osteogenic sarcoma, carcinoma and adenocarcinoma cell lines. GM-CSF is species specific and human GM-CSF has no biological effects on mouse cells.

Source:

Recombinant Human GM-CSF is expressed from Escherichia coli. It contains AA Ala 18 - Glu 144. Predicted molecular mass 17.3 kDa. The protein migrates as 20-22kDa under reducing (R) condition (SDS-PAGE) This protein carries a polyhistidine tag at the N-terminus.



Endotoxin:

Less than 1.0 EU per µg by the LAL method.

AA Sequence:

APARSPSPS TQPWEHVNAI QEARRLLNLS RDAAEMNET VEVISEMFDL QEPTCLQTRL ELYKQGLRGS LTKLKGPLTM
MASHYKQHCP PTPETSCATQ IITFESFKEN LKDFLLVIPF DCWEPVQE

Purity:

Purity >90% as determined by SDS-PAGE.

Formulation:

Lyophilized from 0.22 µm filtered solution in PBS, pH7.4. Normally trehalose is added as protectant before lyophilization. Contact us for customized product form or formulation.

Reconstitution

Reconstitute in sterile distilled water or aqueous buffer containing 0.1% BSA to a concentration of 0.1-1.0 mg/mL. Stock solutions should be apportioned into working aliquots and stored at < -20°C. Further dilutions should be made in appropriate buffered solutions.

Storage

For long term storage, the product should be stored at lyophilized state at -20°C or lower.

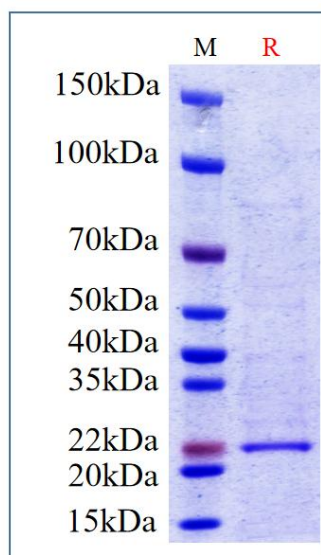
Please avoid repeated freeze-thaw cycles.

This product is stable after storage at:

-20°C to -70°C for 12 months in lyophilized state;

-70°C for 3 months under sterile conditions after reconstitution.

SDS-PAGE



Human GM-CSF, His Tag on SDS-PAGE under reducing (R) condition. The gel was stained overnight with Coomassie Blue. The purity of the protein is greater than 90%.