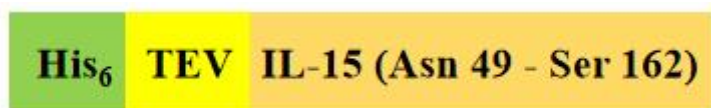


## Background:

Human Interleukin-15 (IL-15) is expressed by the IL15 gene located on the chromosome 4. It shares approximately 97% and 73% sequence identity with simian and murine IL-15, respectively. Both human and simian IL-15 are active on murine cells. IL-15 is secreted by mononuclear phagocytes (and some other cells), especially macrophages following infection by virus. It possesses a variety of biological functions, including stimulating and maintaining of cellular immune responses, especially regulating T and natural killer (NK) cell activation and proliferation. In additionally, it shares many biological properties with IL-2, including T, B and NK cell-stimulatory activities. IL-15 signals through a complex composed of IL-2/IL-15 receptor beta chain.

## Source:

Recombinant Human IL-15 is expressed from Escherichia coli. It contains AA Asn 49 - Ser 162. Predicted molecular mass 15.5 kDa. This protein carries a polyhistidine tag at the N-terminus.



## Endotoxin:

Less than 1.0 EU per µg by the LAL method.

## AA Sequence:

NWVNVISDL KKIEDLIQSM HIDATLYTES DVHPSCKVTA MKCFLELQV ISLESGDASI HDTVENLIL ANNSLSSNGN  
VTESGCKECE ELEEKNIKEF LQSFVHIVQM FINTS

## Purity:

Purity >90% as determined by SDS-PAGE.

## Formulation:

Lyophilized from 0.22 µm filtered solution in PBS, pH7.4. Normally trehalose is added as protectant before lyophilization. Contact us for customized product form or formulation.

## Reconstitution

Reconstitute in sterile distilled water or aqueous buffer containing 0.1% BSA to a concentration of 0.1-1.0 mg/mL. Stock solutions should be apportioned into working aliquots and stored at < -20°C. Further dilutions should be made in appropriate buffered solutions.

## Storage

For long term storage, the product should be stored at lyophilized state at -20°C or lower.

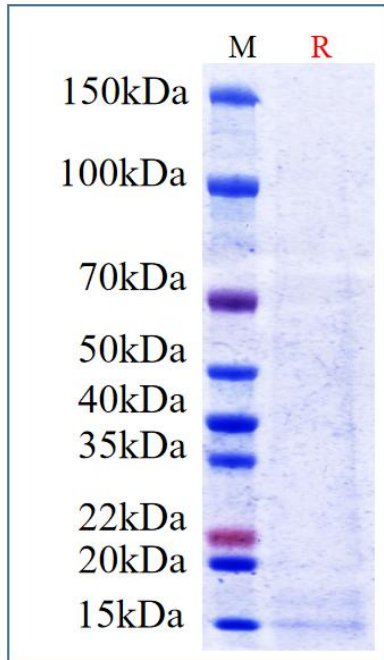
**Please avoid repeated freeze-thaw cycles.**

This product is stable after storage at:

-20°C to -70°C for 12 months in lyophilized state;

-70°C for 3 months under sterile conditions after reconstitution.

## SDS-PAGE



Human IL-15, His Tag on SDS-PAGE under reducing (R) condition. The gel was stained overnight with Coomassie Blue. The purity of the protein is greater than 90%.